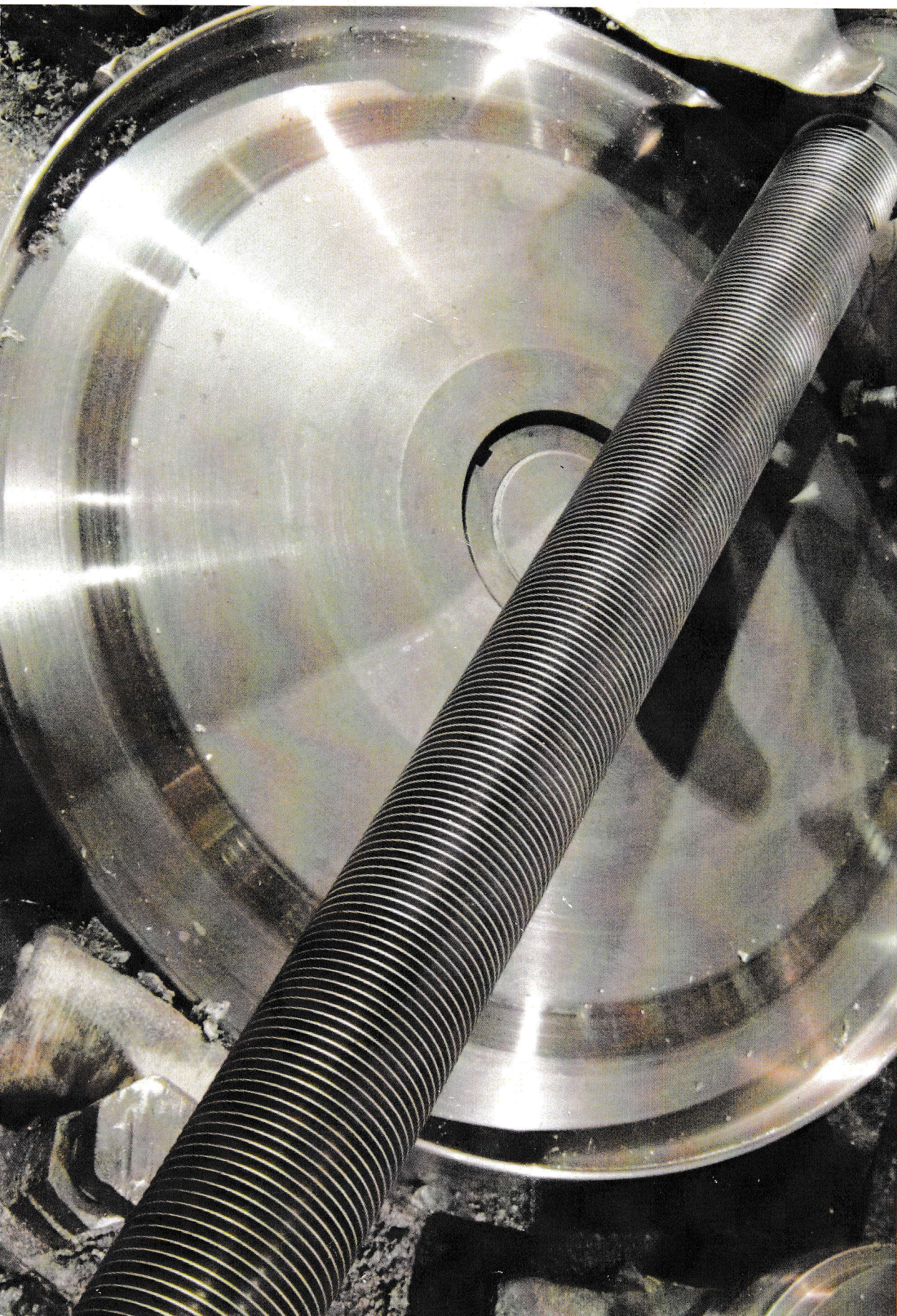


FIN-X AIR-COOLED FINTUBE HEAT EXCHANGERS

Custom designed
air-cooled
heat exchangers
for engines
gas compression
oil cooling
gas processing
condensing
chemical plants
and refineries



FIN-X, INC.

402 West 2nd Ave
P.O. Box 1048
Owasso, OK 74055
(918) 272-9546
Fax (918) 272-5901

www.finx.us
sales@finx.us

When you order one
of FIN-X Inc.'s professionally
engineered air-cooled heat
exchangers for your custom
application, you can be sure
it meets all of your requirements,
and more. Because careful
attention to your order at
FIN-X is by design, not chance.



FIN-X equipment is Custom designed to withstand every type of operating condition, including onshore, offshore, arid and unusual climates.

Air coolers from FIN-X meet all ASME code requirements, including those applications that require variations to our normal product line. Our computer programming capability, quality construction and reliable production scheduling allow us to meet your most demanding performance requirements.

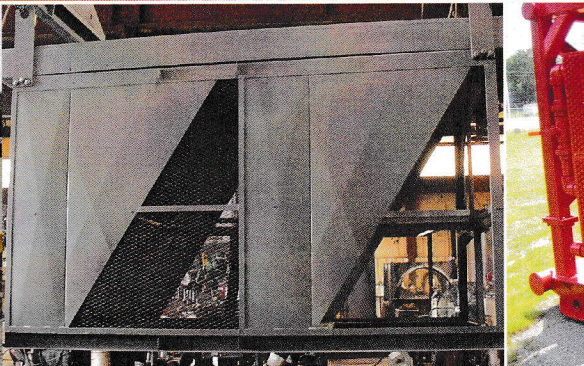
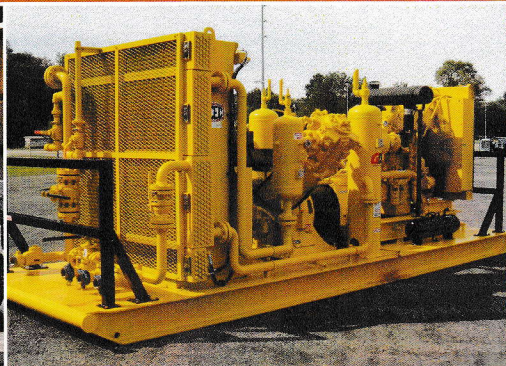
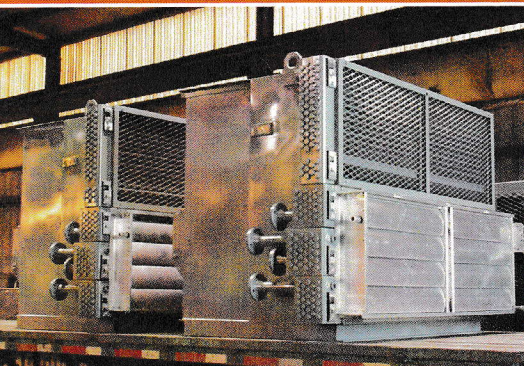
It is our experience and expertise in thermal and mechanical design, plus an equally talented work force of ASME welders and other craftsmen that assures your needs will be met.

All FIN-X air cooled heat exchangers have the following **STANDARD FEATURES:**

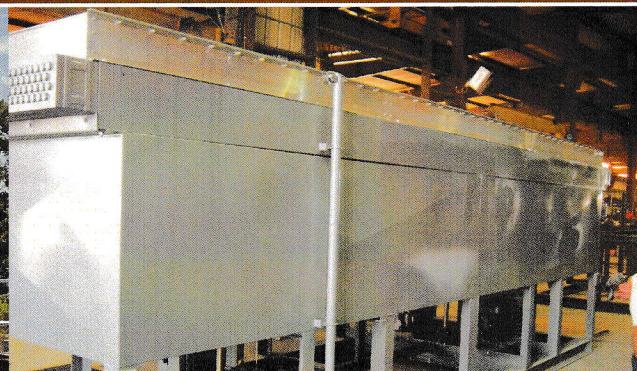
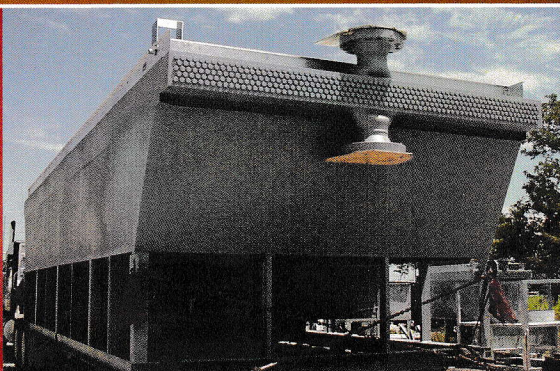
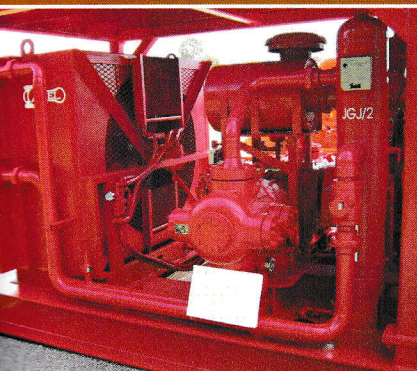
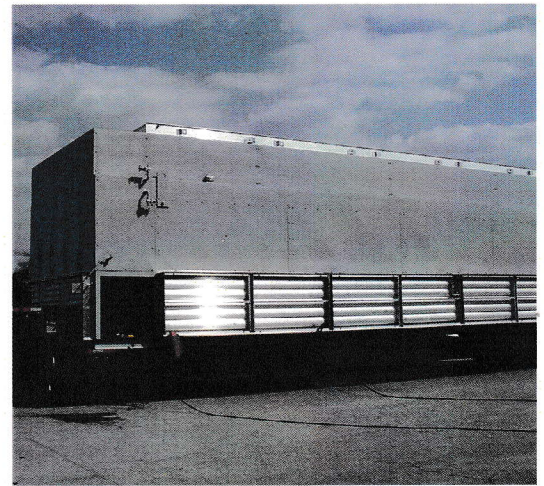
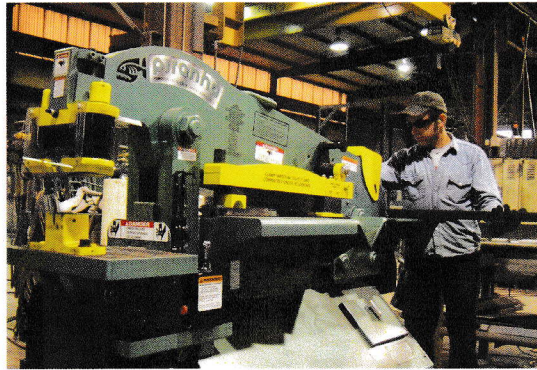
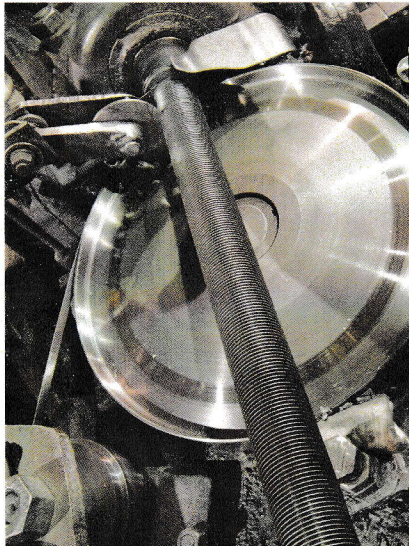
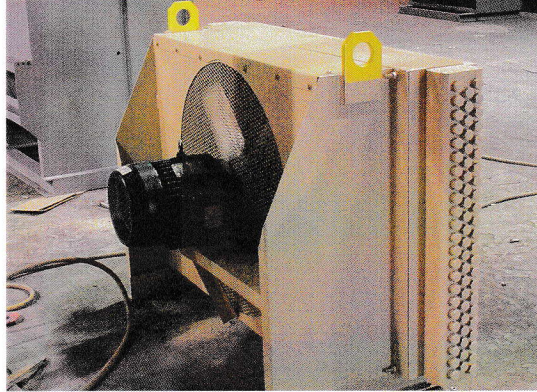
- *All steel construction*
- *Angle base, mechanically-bonded aluminum fins*
- *Horizontal or vertical air intake and discharge*
- *Electric motor or engine-driven fans*
- *Balanced aluminum fans designed to reduce horsepower*
- *Headers with access plugs*
- *Inlet and outlet connections: flanged, threaded or stub-end*
- *Standard protective finish with full primer coat on headers and structural steel*
- *Completely packaged, ready to mount.*

Optional Features

- *ASME code stamp on request*
- *API 661 construction*
- *Radiographic inspection*
- *Hot dip galvanizing*
- *Special Coatings*
- *Manual or automatic shutters*
- *Hot air recirculation systems*
- *Tubes of admiralty, stainless steel or other specialty metals.*
- *Stainless steel Headers*
- *Oil field type skid*
- *Mounted surge tank*
- *Special fan drive arrangements*
- *Coils for natural convection or air duct mounting*

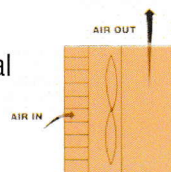


FINX



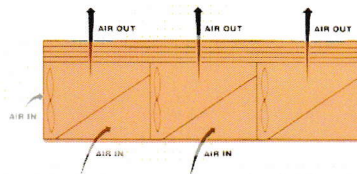
MODEL FX

Offers individual or combined cooling of water, oil or gas. Features horizontal air intake and vertical discharge for prevention of hot air recirculation.



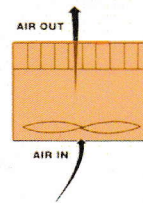
MODEL HX

Vertical air discharge for limited space or higher horsepower applications.



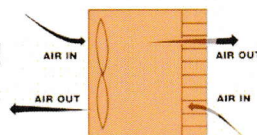
MODEL HL

Specially designed cooling for processing applications ranging from the smallest single fan unit to large coolers requiring multiple fans. Provides vertical air intake and discharge.



MODEL VT

Our most economical cooling arrangement offers horizontal air intake and discharge in either forced or induced draft. The VT is suitable for smaller units where hot air recirculation would be insignificant.



Other Models and Products

Custom designed configurations are available for platforms, trailers, air ducts or restricted spaces. Telephone or written inquiries receive fast response. Our experienced professional staff can also provide design assistance upon request.

Finned Tubes are available to retube most coils, even those manufactured by others. In an emergency, retubing can usually be accomplished within one day.

Replacement parts, such as fans, bearings, shafts, louvers, motors, and plugs are available from our inventory.

